

IPC2152/2252

KEDACOM

快速安装指南
Quick Start Guide

一 前言

感谢您购买我司产品，如对本公司产品有疑问或需要，请随时和我们联系。

我们尽最大努力来保证本手册信息的正确性，如因升级等原因发生信息修改，恕不另行通知。获取最新文档请联系产品供应商。

二 安全说明

此内容（手册）的目的是确保用户正确使用本产品，以避免危险或财产损失。在使用产品之前，请认真阅读此手册并妥善保存以备日后参考。如果用户因没有按照以上安全说明，致使设备不能正常使用或损坏设备等情况，责任由用户承担。

1. 请使用满足安全电压要求的电源。
2. 如果设备工作不正常，请联系购买设备的商店（厂家）或最近的服务中心。不要以任何方式随意拆卸或修改设备。
3. 请防止此产品从高处摔落或受强烈敲击。
4. 清洁镜头时，请使用吹气球或专业镜头布除去镜头上的污垢。清洁透明护罩时，须使用足够柔软、干燥的布清洁擦拭，切勿使用含有酒精、苯等的清洁剂进行洗涤。
5. 避免将摄像机对准强光（如灯光照明、太阳光等处）聚焦，否则容易引起过亮或漏光现象（这并非摄像机故障），将影响摄像机寿命。
6. 避免将产品暴露在非用户手册所示的工作环境下使用。

工作环境	
工作电源	DC 12V±10%
温度	-30℃ ~60℃
湿度	10%~95%（无凝结）
海拔高度	-60m~3000m
大气压	86kPa~106kPa

7. 使用时不可让水或任何液体流入摄像机。
8. 当运送摄像机时，请重新以出厂时的包装进行包装，或用同等品质的材料包装。
9. 需要替换部件时，请事先与经销商联系，更换指定型号的部件，或与原部件具有相同特性的部件。擅自使用其它部件进行替换，后果自负。
10. 本产品达到 IP66 防护等级，工作于室外露天环境时，请注意设备尾线的防水处理。

【说明】更多信息见附带光盘中的《高清网络摄像机用户手册》。

三 设备安装

摄像机支持壁装、吊装、横臂安装、立柱支架安装，安装前请预先准备安装配件。

整机重量（不含支架）：520g

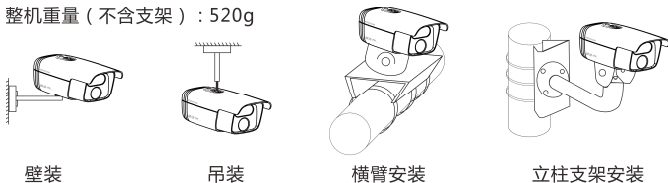


图 1

1. 设备安装存储卡后支持图片告警抓拍和录像存储。存储卡安装步骤如图。为保证防水性能，请确保密封盖拧紧后低于设备表面约 0.5mm。

【说明】支持最大容量 32G 存储卡。

2. 连接线缆，如图 2，上电。

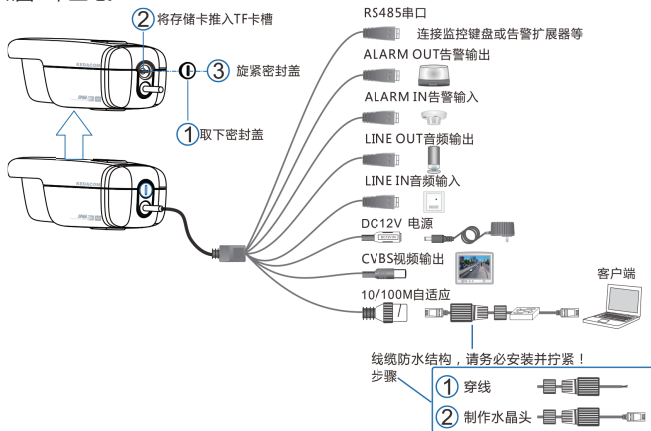


图 2

【说明】设备支持 POE 供电，即网口供电，网口连接 POE 路由后无需连接其他电源。

3. 登录客户端

最低配置和系统环境：

- 处理器：2.0 GHz 酷睿®2 系列或相同性能的其他处理器
- RAM 内存：2GB 及以上
- 操作系统：Windows XP 操作系统或更高版本
- 浏览器：IE6.0 或更高版本
- DirectX：9.0c

【说明】本指南将以 Windows XP 为例，说明登录客户端步骤。

- 1) 设备出厂时 IP 地址为 0.0.0.0，第一次使用时请与 PC 接入同一交换机，使用光盘中附带的 IPCSearch 分配 IP 地址。若 IPC 设备所接入的网络有 DHCP 服务，DHCP 服务器将自动给 IPC 分配 IP 地址。

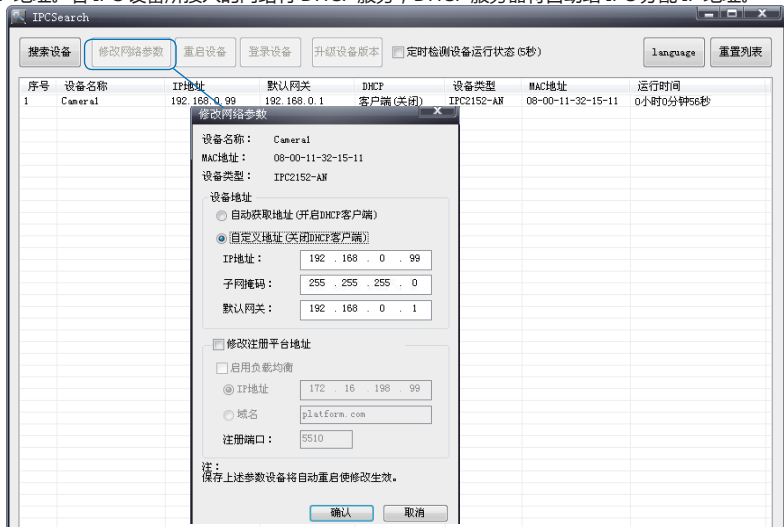


图 3

- 2) 运行 IPCSearch, 搜索并选中需要配置的设备, 点击 **修改网络参数** 按钮。静态分配 IP 地址时, 请选择自定义地址, 填写以太网参数。完成 IP 配置后, 设备将自动重启, 重启时间约为 60 秒。
- 3) 设备重启后, 可直接在 IPCSearch 中点击 **登录设备** 登录 web 客户端。如果已配置过 IP, 可以直接在 IE 地址栏中输入设备的 IP 地址, 连接 web 客户端。
- 4) 在登录界面输入默认管理员用户名与密码, 均为 admin, 操作员用户名和密码, 均为 guest。

【说明】 首次运行 web 客户端时, 请先下载并安装视频控件。

- 如果下载控件不成功, 请进行如下操作:
- 1) 点击 IE 工具栏 "Internet 选项 > 安全页签"。
 - 2) 点击页签上的 "可信站点 > 站点", 输入该 IPC 设备地址, 并添加。

【说明】 在添加地址时, 请去掉 "对该区域中的所有站点要求服务器验证" 选项。

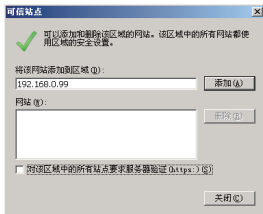
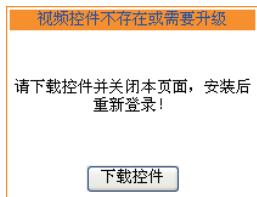


图 4

- 如果使用 Windows 7 或 Vista 操作系统时, 请确认 UAC 服务已经关闭。

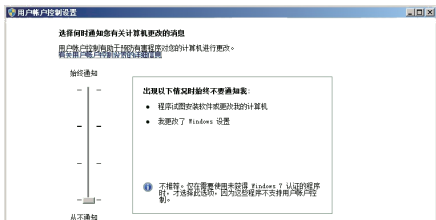
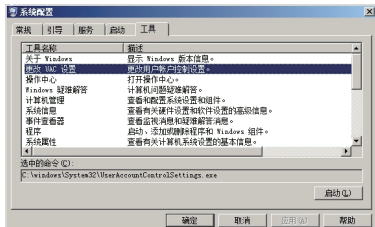


图 5

- 1) 打开 "开始 > 运行 > msconfig > 工具", 选择 "更改 UAC 设置", 点击 "启动" 按钮。

2) 将滑块拖在最底端，点击“确定”后重新启动 PC 即可。

设置完成后，请在 IE 地址栏中重新输入设备的 IP 地址，并按提示安装控件，登录 IPCCtrl。



图 6

4. 图像浏览和镜头调整

进入客户端后，可以直接浏览图像，界面如图 7。



图 7

【说明】更多客户端说明参见客户端帮助文档。
调整设备方向，在 IPCtrl 上进行参数微调，直到浏览画面达到预定要求。

保修说明

本保修卡适用于您购买的本公司系列产品。

- 1.终身保质，免费保修期一年，如合同中有另行约定则以合同为准。
- 2.凡保修期内，由于本产品自身引起的故障，请与公司售后服务部联系。
- 3.保修时我们将使用您的保修卡信息，请认真填写。
- 4.以下情况，属于有偿保修范围：
 - 人为原因造成的设备故障
 - 因使用环境不符合本产品要求造成的故障
 - 因不可抗力造成的产品损坏
 - 无保修卡
 - 已过保修期

用户信息

用户名称：

详细地址：

传真：

电话：

邮箱：

邮编：

产品名称：

产品型号：

购买日期：

Trademarks

Kedacom™, TrueSens™ and **KEDACOM**™ are registered trademarks of Suzhou Keda Technology Co., Ltd. in China and various other countries. All other trademarks mentioned in this document are the property of their respective holders.

Suzhou Keda Technology Co., Ltd.

131 Jinshan Road

New District, Suzhou, 215011

People's Republic of China

<http://www.kedacom.com/en>

Tel: +86-512-68418188

Fax: +86-512-68412699

© 2014 Suzhou Keda Technology Co., Ltd. All rights reserved.

Without the prior written permission of Suzhou Keda Technology Co., Ltd., any reproduction, translation or retransmission of all or any part of this document for any purpose in either.

Notice

The information in this document is subject to change without notice. Every effort has been made in the preparation of this document to ensure accuracy of the contents, but all statements, information, and recommendations in this document do not constitute a warranty of any kind, express or implied. Suzhou Keda Technology Co., Ltd. is not responsible for printing or clerical errors electronic or mechanical form is not allowed.

Preface

Thank you for purchasing our product. If there are any questions, or requests, please do not hesitate to contact us.

Every effort has been made to ensure the accuracy and validity of this Guide. Any update of this Guide is subject to change without notice. For the latest document, please contact the dealer.

Safety Instruction

These instructions are intended to ensure that the user can use the product correctly to avoid danger or property loss. Please read this Guide carefully before using the product, and keep it properly for future reference. If the product cannot work normally or is damaged because the user does not follow the safety instructions, we shall not assume any responsibility.

- Please adopt power supply in the safety voltage range.
- If the product does not work properly, please contact your dealer or the nearest service center. Never attempt to disassemble or repair the product yourself in any way.
- Do not drop the camera or subject it to physical shock.
- When cleaning the lens, please use a rubber dust blower or lens cleaning cloth to remove the dirt. When cleaning transparent housing, please use soft and dry cleaning cloth to wipe it gently. Never apply any cleanser with ethanol or benzene in it
- Do not focus the camera lens on strong light such as the sun or incandescent lamp. The strong light can cause overexposure or light leak (not camera malfunction), which may shorten camera lifetime.
- Do not expose the camera in the environment not defined in the Guide.

Operating Environment	
Working Voltage	DC12V \pm 10%
Temperature	-30°C~60°C
Humidity	10%~95% (non-condensing)
Altitude	-60m~3000m
Atmospheric Pressure	86kPa~106kPa

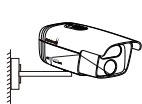
- Keep the camera away from water or any liquid.
- While shipping the camera, pack it in the factory packing or use materials with equivalent quality.
- When it is necessary to replace a part, please contact your dealer in advance and replace the part with specified model or part of the same features. We shall not assume any responsibility for problems caused by unauthorized replacement.
- The camera is IP66-rated. When expose it outdoor, remember to handle with the back cable of the camera and make it water-proof.

[Note]: For more information, please refer to the *User Manual for HD IP Camera* in the attached CD.

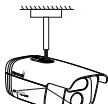
Installation Steps

The camera supports ceiling bracket mount, wall bracket mount, beam bracket mount or pole bracket mount. Please get the accessories ready before installation.

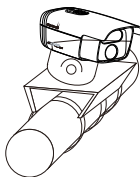
Camera Weight (bracket excluded): 520g



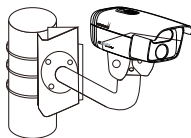
Wall Bracket Mount



Ceiling Bracket Mount



Beam Bracket Mount



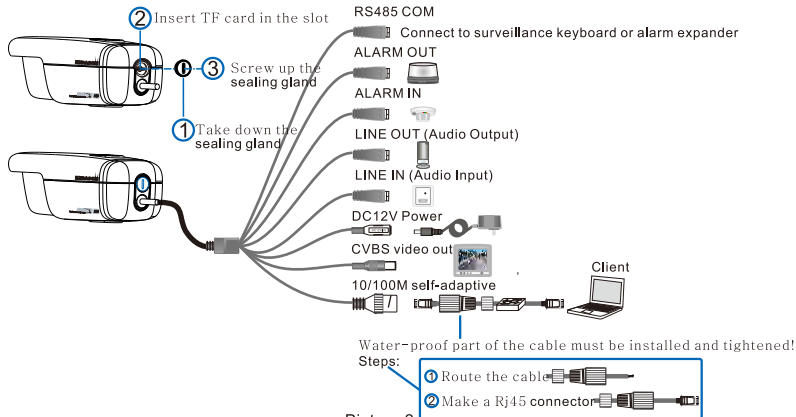
Pole Bracket Mount

Picture 1

1. Install a TF card in the camera to enable camera functions of alarm snapshot and recording. Installation steps are shown in the picture. To make sure the camera is water-proof, please screw up the sealing gland tight and 0.5mm lower than the camera surface.

[Note]: Max memory of TF card can be 32G.

2. Connect the cable, as Picture 2 shows, and power on.



Picture 2

[Note]: The camera supports PoE (Power on Ethernet). Only have to connect RJ45 connector to PoE switch and no other power supply is needed.

3. Login client

System for client installation:

Processor: 2.0 GHz CORE@2 series or other equivalent processors

RAM Memory: 2GB or above

Operating System: Windows XP or newer version

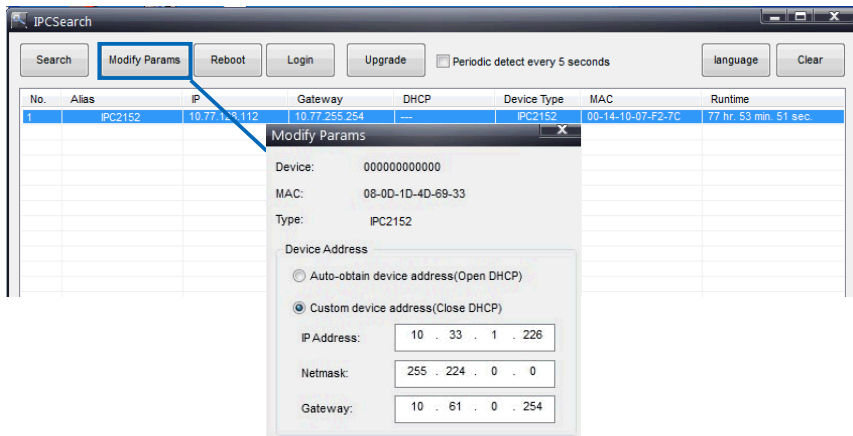
Browser: IE6.0 or newer version

DirectX : 9.0c

[Note]: This Guide will take Windows XP as example to explain client login steps.

1) The factory default IP of camera is 0.0.0.0. Please set the camera and the PC in the same LAN and use IPCSearch to configure IP. If the network provides DHCP service, DHCP server will configure IP for the camera automatically.

2) Run IPCSearch, select the target camera, and click **Modify Params**. When configure a static IP for the camera, please check "Custom device address (Close DHCP)" and fill the Ethernet parameter. After configuration, the camera will reboot automatically and this takes 60s.



Picture 3

3) After reboot, user can click **Login** to login web client. If IP configuration has been finished, user can input camera IP address in IE to go to web client.

4) Enter default admin user name and password, both of which are "admin", or operator user name and password, both of which are "guest".

[Note]: When run web client for the first time, please download and install video ActiveX control.

If user fails to download the ActiveX control, operate as follows:

1) Click "Internet Options>Security".

2) Click "Trusted Sites>Sites", input the IP address of this camera and add.

[Note]: When add an address, uncheck "Require server verification (https:) for all sites in this zone".

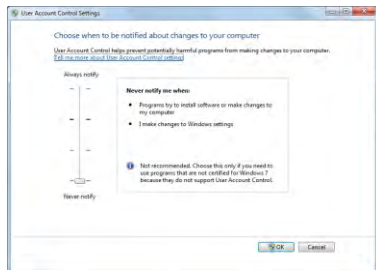
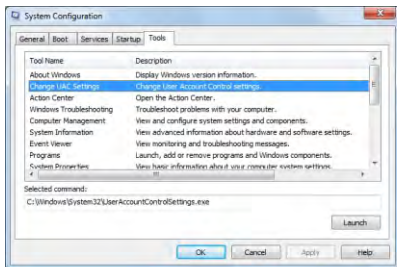


Picture 4

If operate under Windows 7 or Vista system, make sure that the UAC service has been disabled.

1) Run "Start>Operate>msconfig>Tool", select "Modify UAC Setting", and click "Enable".

2) Drag the slider to the bottom, click "OK" and reboot PC.



Picture 5

After configuration, please input the IP address of the camera in IE, and install the ActiveX control to login ICCtrl.



Picture 6

4. Live view and lens adjustment

After login, user can view live video directly, as the picture shows.



Picture 7

[Note]: Please refer to the help file of IPCCtrl for detailed explanation.

Adjust camera direction, configure camera parameters in IPCCtrl until the live view meets requirement.

Kedacom Two (2) Year Limited Hardware Warranty

WHAT IS COVERED BY THIS WARRANTY?

Kedacom warrants the Kedacom-branded hardware product and accessories contained in the original packaging (hereinafter referred to as "Kedacom Product") against defects in materials and workmanship when used normally in accordance with Kedacom's published guidelines for a period of TWO (2) YEARS from the date of original retail purchase by the end-user purchaser (hereinafter referred to as "Warranty Period"). Kedacom's published guidelines include but are not limited to information contained in technical specifications, user guides, and service communications. The preceding applies unless otherwise agreed in the contract.

WHAT IS NOT COVERED BY THIS WARRANTY?

This warranty does not apply to any non-Kedacom branded hardware products or any software, even if packaged or sold with Kedacom hardware. Manufacturers, suppliers, or publishers, other than Kedacom, may provide their own warranties to you but Kedacom, in so far as permitted by law, provides their products "AS IS". Software distributed by Kedacom with or without the Kedacom brand (including, but not limited to system software) is not covered by this warranty. Please refer to the licensing agreement accompanying the software for details of your rights with respect to its use. Kedacom does not warrant that the operation of the Kedacom Product will be uninterrupted or error-free. Kedacom is not responsible for damage arising from failures to follow instructions relating to the Kedacom Product's use.

This warranty does not apply: (a) to consumable parts, such as batteries, unless failure has occurred due to a defect in materials or workmanship; (b) to cosmetic damage, including but not limited to scratches, dents, and broken plastic on ports; (c) to damage caused by use with another product; (d) to damage caused by acts outside the control of Kedacom, including without limitation acts of God, accidents, abuse, misuse, fire, storms, earthquakes, flood, or other external cause; (e) to damage caused by exposure of the product to heat, bright light, sun, liquids, sand, or other contaminants; (f) to damage caused by operating the Kedacom Product outside Kedacom's published guidelines; (g) to damage caused by service (including upgrades and expansions) performed by anyone other than a representative of Kedacom, Kedacom employee, or authorized Kedacom agent; (h) to an Kedacom Product that has been modified to alter functionality or capability without the written permission of Kedacom; (i) to defects caused by normal wear and tear or otherwise due to the normal aging of the Kedacom Product, or (j) if any serial number has been removed or defaced from the Kedacom Product.

YOUR RESPONSIBILITIES

If your Kedacom product is capable of storing data and other information, you should make periodic backup copies of the information contained on the storage media to protect the contents and as a precaution against possible operational failures.

Before receiving warranty service, Kedacom or its authorized agents may require that you furnish proof of purchase details, respond to questions designed to assist with diagnosing potential issues, and follow Kedacom's procedures for obtaining warranty service. Before submitting your Kedacom Product for warranty service, you should maintain a separate backup copy of the contents of its storage media, remove all personal information that you want to protect, and disable all security passwords.

During warranty service, it is possible that the contents of the Kedacom product's storage media will be lost, replaced or reformatted. In such an event, Kedacom and its authorized agents are not responsible for any loss of data or other information contained on the storage media or any other part of the Kedacom product serviced.

Following warranty service, your Kedacom Product or a replacement product will be returned to you as your Kedacom Product was configured when originally purchased, subject to applicable updates. You will be responsible for reinstalling all other data and information. Recovery and reinstallation of other data and information are not covered under this warranty.

WHAT WILL KEDACOM DO IF THE WARRANTY IS BREACHED?

If during the Warranty Period, you submit a valid claim to Kedacom or an authorized Kedacom agent, Kedacom will, at its option, (i) repair the Kedacom Product using new or previously used parts that are equivalent to new in performance and reliability, or (ii) exchange the Kedacom Product for a refund of your purchase price.

A Kedacom replacement part or product, including a user-installable Kedacom part that has been installed in accordance with instructions provided by Kedacom, assumes the remaining warranty of the Kedacom Product or ninety (90) days from the date of replacement or repair, whichever provides longer coverage for you. When a product or part is replaced or a refund provided, any replacement item becomes your property and the replaced or refunded item becomes Kedacom's property. Kedacom reserves the right to refund the purchase price as its exclusive warranty remedy.

HOW TO OBTAIN WARRANTY SERVICE?

To seek warranty service, please contact a local authorized Kedacom agent. When contacting the agent via telephone, other charges may apply depending on your location.

User Information

Complete the form below and keep for ready reference.

User Name:	
Address:	Postal Code:
Tel:	Mobile:
Fax:	E-Mail:
Product Name:	Product Model:
Date of Purchase:	

客户咨询热线：**800-828-2866** **400-828-2866**

KEDACOM

苏州科达科技股份有限公司

Suzhou Keda Technology Co.,Ltd.

中国: 江苏省苏州市高新区金山路131号(215011)

Tel: +86-512-68418188 Fax: +86-512-68412699

Suzhou Keda Technology Co.,Ltd.

Singapore: 627A Aljunied Road, #09-07, BizTech Centre, Singapore 389842

Tel: +65-6842-5700 Fax: +65-6842-5900