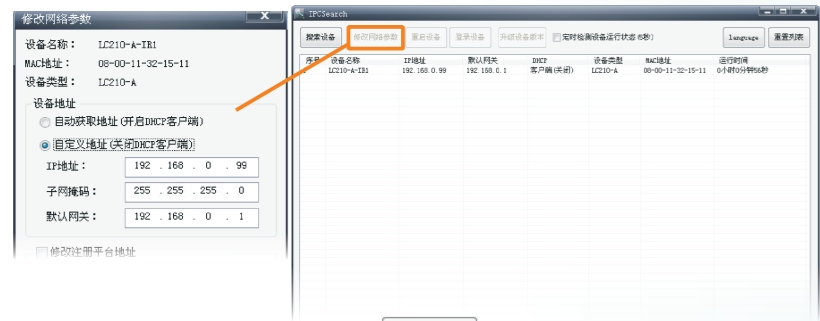


配置及使用

第一次使用时请与PC接入同一交换机。

1 运行光盘上附带IPCSearch配置工具，IPCSearch将自动搜索局域网中的设备并显示在列表中。

设备出厂时IP地址为0.0.0.0，若IPC设备所接入的网络开启DHCP服务，DHCP服务器将自动给IPC分配IP地址，可跳过本页后续步骤，在IPCSearch列表中双击设备，并登录。



2 在列表中选中需要配置的静态IP的设备，点击 **修改网络参数** 按钮，如图。

3 填写以太网参数。

注意：修改完网络参数后，设备会自动重启，请耐心等待设备重启完成后再次登录。

7

登录客户端

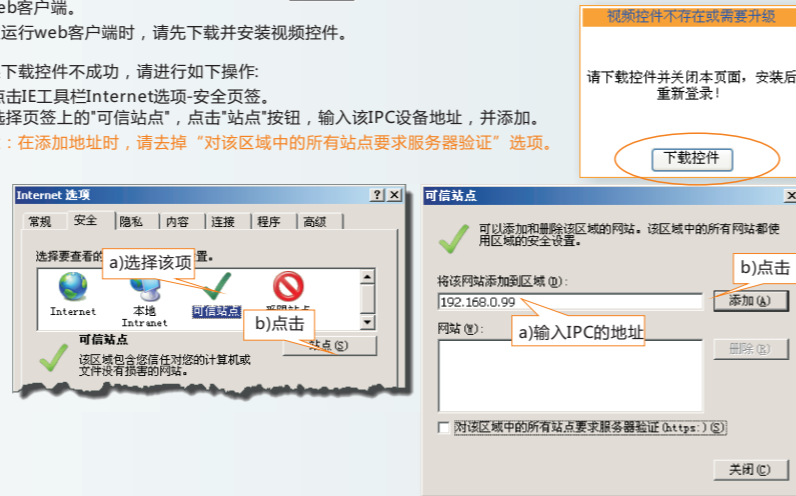
完成IP配置后，可直接在IPCSearch中点击 **登录设备** 登录web客户端。或在IE浏览器地址栏中输入设备的IP地址，连接web客户端。

首次运行web客户端时，请先下载并安装视频控件。

如果下载控件不成功，请进行如下操作：

1. 点击IE工具栏Internet选项-安全页签。
2. 选择页签上的“可信站点”，点击“站点”按钮，输入该IPC设备地址，并添加。

注意：在添加地址时，请去掉“对该区域中的所有站点要求服务器验证”选项。

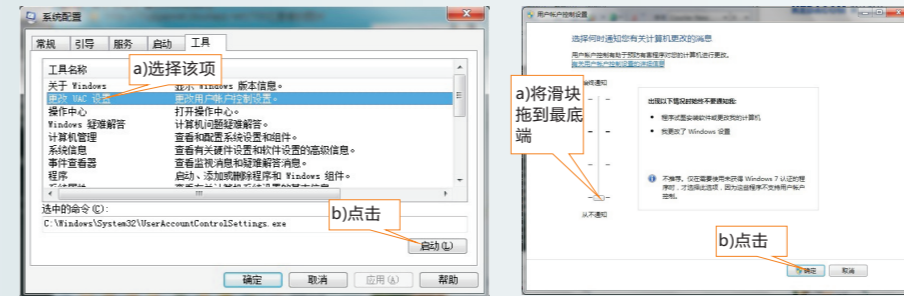


8

如果使用Windows 7或Vista操作系统时，请确认UAC服务已经关闭。

1 打开“开始>运行>msconfig>工具”，选择“更改UAC设置”，点击“启动”按钮。

2 将滑块拖在最底端，点击“确定”“后重新启动PC即可。



设置完成后，请在IE地址栏中重新输入设备的IP地址，并按提示安装控件，登录IPCctrl web客户端。

在登录界面输入默认用户名与密码，均为admin，操作员用户名和密码，均为guest。



9

进入客户端后，可以直接浏览图像，菜单界面如图。

上方：菜单区域；左方：云台控制和摄像机调节区域。



关于IPC的详细配置方法请参见设备的用户手册。

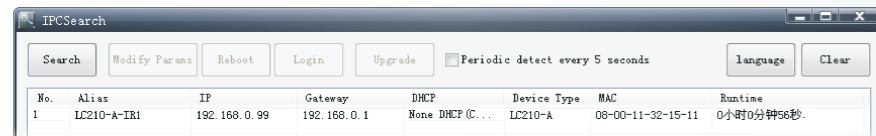
10

Network configuration

Make sure your PC and the IPC device are in the same LAN, in case the IPC device can not be detected.

1 Run IPCSearch in the installation CD on your PC and the tool will search IPC in the Ethernet and show them on the list.

The default IP is 0.0.0.0. IPC will be deployed a IP automatically when the DHCP service is on in the Ethernet. In this case, you can skip the steps below and double click the IPC in the list to login.



2 Select the device by click its name inside the list and configure the IP address by click **Modify Params**, the figure is as following.

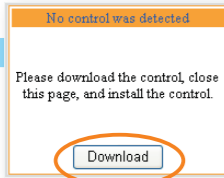
3 Enter the parameters about Ethernet.

Notice: The camera would reboot as soon as the deploying is finished. Please login when it is started up after some time.

Login

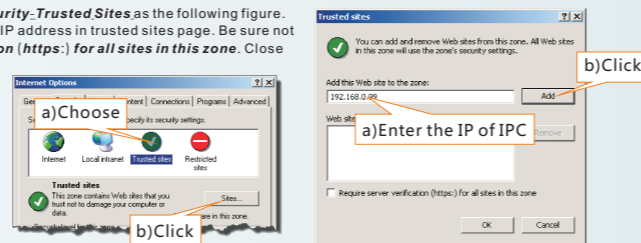
Double click the target device in the list of IPCSearch, and it will switch to the login website.

If the OCX control can not be download successfully, please follow below instructions:



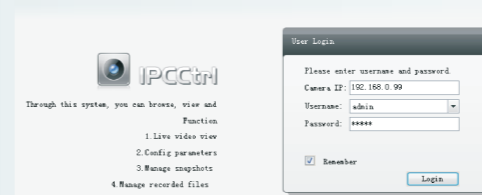
11

- 1 Click **tools-Internet Options-Security-Trusted Sites** as the following figure.
- 2 Click Sites button then add the IPC IP address in trusted sites page. Be sure not to select **require server Verification (https) for all sites in this zone**. Close the interface and re-login.



12

The default administrator's login name and password are both admin, while the operator's login name and password are guest. In the live video interface, if the video display successfully, it means the installation is finished. The login interface is as following, you can configure IPC parameters after logging in.



After log in the IPCctrl, user can directly browse the live video. The IPCctrl provides PTZ control, image adjustment icons in the left, and function menu at the top.



13

配置环境/Enviroments

最低配置和系统环境：
处理器：2.0 GHz 酷睿®2系列或相同性能的其他处理器
RAM内存：2GB及以上
操作系统：Windows XP 操作系统或更高版本
浏览器：IE6.0 或更高版本
DirectX：9.0c

System Requirement:
CPU: 2.0 GHz Core 2 or higher
RAM: 2 GB or higher
Operating System: Windows XP or later version
Browser: IE 6.0 or later version
DirectX : 9.0c

说明:使用Windows 7操作系统时，为保证程序正常运行，请关闭系统防火墙并以管理员身份运行IPCSearch。
Notice: To ensure the regular running please turn off the Firewall and run IPCSearch as administrator.

14

高清网络摄像机快速使用指南

HD Network Camera Quick Reference

高清红外防水网络摄像机
HD Infrared Water-proof Network Camera
LC210 Series
LC2200 Series

苏州科达科技股份有限公司
Suzhou Keda Technology Co., Ltd



05.03.072821R

前言

感谢您购买我司产品，如对本公司产品有疑问或需要，请随时和我们联系。我们尽最大努力来保证本手册信息的正确性，如因升级等原因发生信息修改，恕不另行通知。获取最新文档请联系产品供应商。

安全说明

此内容的目的是确保用户正确使用本产品，以避免危险或财产损失。在使用产品之前，请认真阅读此手册并妥善保存以备日后参考。

1. 请使用满足安全电压要求的电源。
2. 如果设备工作不正常，请联系购买设备的商店或最近的服务中心。不要以任何方式随意拆卸或修改设备。
3. 请勿将此产品摔落地下或受强烈敲击。
4. 在对摄像机进行清洁时，请使用吹气球除去镜头或滤光片上的尘埃。使用柔软、干燥的布清洁摄像机的外表面。对于镜头上顽固的污迹，可使用专业镜头纸擦拭。请勿使用挥发性溶剂，如酒精、苯、稀释剂等，以免损坏表面涂层。
5. 避免将摄像机对准强光（如灯光照明、太阳光等处）聚焦，否则容易引起过亮或漏光现象（这并非摄像机故障）也将影响摄像机寿命。
6. 避免将产品暴露在非用户手册所示的工作环境下使用。
7. 使用时不可让水或任何液体流入摄像机内部或接口。
8. 当运送摄像机时，请重新以出厂时的包装进行包装，或用等品质的材质包装。
9. 需要替换部件时，请事先与经销商联系，更换指定型号的部件，或与原部件具有相同特性的部件。擅自使用其它部件进行替换，后果自负。用户在使用设备时，请遵守以上安全说明。如果用户因没有按照以上安全说明，致使设备不能正常使用或损坏设备等情况，责任由用户承担。

说明：更多信息见附带光盘中的《高清网络摄像机用户手册》。

1

Preface

Thank you for purchasing our products, if you have any inquiry, please do not hesitate to contact with us. We try our best to insure the correctness, and our document will update with the software without announcement, please ask your provider for the latest document.

Safety Rules

- The purpose of this content is to ensure that users use the product correctly to avoid danger or damage to property. Before using this product, please read this manual carefully and keep it for further reference.
1. Please use the power supply voltage satisfying the safety requirements.
 2. If the device is not working properly, please contact the nearest service center. Do not in any way disassemble or modify the device (unauthorized modification or repair the problems caused, at your own risk).
 3. The device do not fall to the ground or by the strong hit.
 4. Cleaning the camera, please use the blower to remove dust on the lens or filter; Use a soft, dry cloth to clean the outer surface of the camera. For stubborn stains, use a little detergent dip a soft cloth to wipe, then dry. Do not use volatile solvents such as alcohol, benzene, and thinner, etc., so as not to damage the surface coating.
 5. To avoid targeting light (such as lighting, sunlight, etc.) focus, otherwise easily lead to too bright or light leak phenomena (this is not a camera malfunction), and the CCD life span decrease.
 6. Avoid exposure to the product user manual, as shown in the environment to use.
 7. Please be sure do not let the water and any liquid flow into the camera.
 8. When transporting the camera, please re-pack the camera in the factory packaging, or using the same quality packaging material.
 9. Whenever needed to replace any parts of the camera, please contact in advance with the nearest service center to replace the specified replacement parts, or parts have the same characteristics of the original components. Unauthorized use of other replacement parts at your peril.

See the user manual for more information.

2

KEDACOM 苏州科达科技股份有限公司

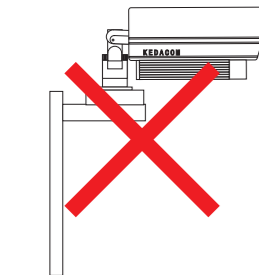
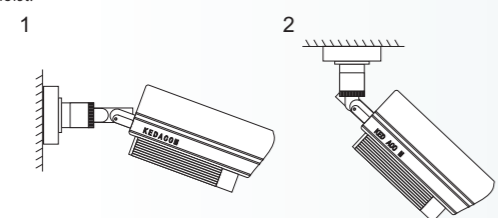
Suzhou Keda Technology Co., Ltd
中国 苏州市新区金山路131号(215011)
电话：800-828-2866 400-828-2866
传真：0512-68412699
邮箱：info@kedacom.com
网址：www.kedacom.com

执行标准：Q/320500 KDC 010-2011

安装效果示意/Effect of the Installation

可根据实际场景应用不同方式安装摄像机，安装完成效果如下列图示。Choose any of below ways to install the camera according to the scene.

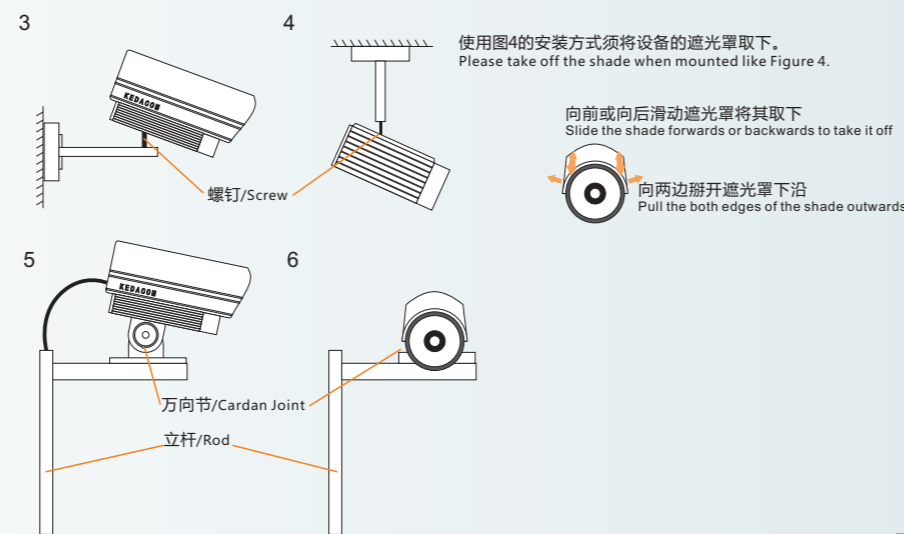
-A系列适合壁装和吊顶安装。
-A models are appropriate for a wall mount or a hoist.



左图的安装方式不适合用-A系列，请选用-B系列加万向节模式，如图5、图6。
-A models are not appropriate for a mount like this as the figure shown on the left side. Please choose the -B models adding cardan joints as the Figure 5 and Figure 6 shown.

3

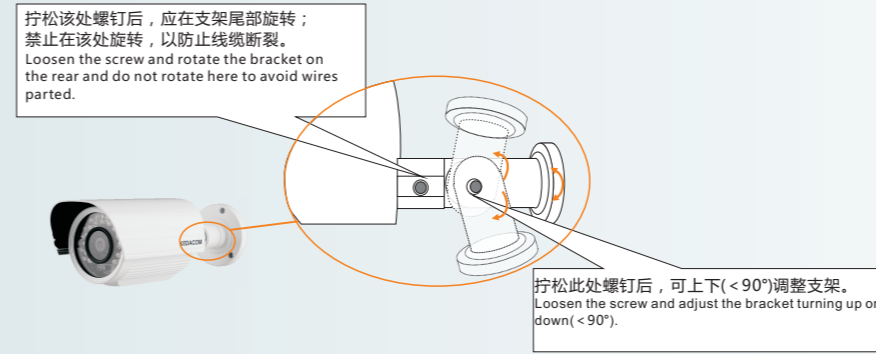
-B系列 不包含支架，须配合吊装、壁装、万向节配件安装。
-B Models do not contain brackets in standard packages. There are additional accessories should be provided when mounting.



4

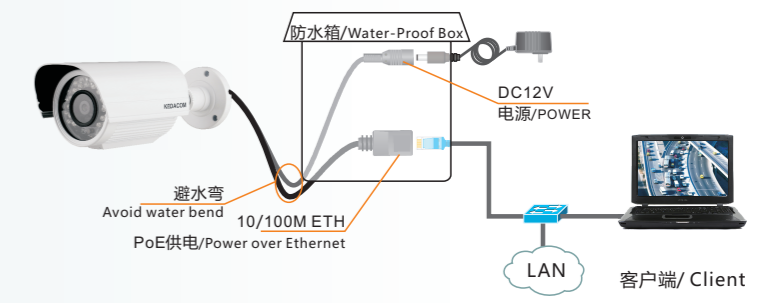
安装注意/ Notication During the Installation

1. 线缆连接好后，请在连接处缠好防水胶布，并置于干燥处，确保液体无法渗入接口。Please wind mackintosh over the connectors after plugged in. And make sure they are always away from water.
2. 如下图所示，拧松支架上的两处螺钉后，可对支架角度进行调整，以找到最合适的监控位置。As figures shown below, loosen the screws on the bracket to adjust for a desired view.



5

线缆连接/Connection



说明：本产品不支持音频、告警功能及TF卡本地存储。
Notice: The series models do not have audio or alarm features.
说明：室外安装时，须缠好防水胶布并置于防水盒或配电箱内，防止液体渗入。
Notice: Joints should be wind up with water-proof rubberized fabric and stored in water-proof box or distribution box to avoid liquid infiltration when installed outdoor.

6