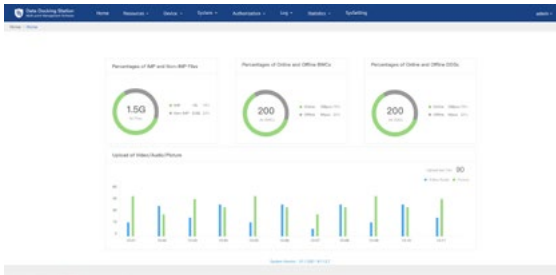


ZFS-KDCA1

Data Docking Station Management Software



Specifications

| | |
|-----------------------------|---|
| | ZFS-KDCA1 Data Docking Station Management Software |
| System Access | |
| Device Access | up to 10,000 body worn cameras access |
| | up to 500 data docking stations access |
| User Access | up to 50 users |
| Management Functions | |
| Device Registering | Kedacom body worn camera, Kedacom data docking station |
| Resource Access | Video recording, Audio recording, Snapshot, Log |
| User Management | Admin / User |
| User Authorization | Layered authorization |
| Statistics | Dash Board, Graphical statistics |
| Application Programming | SDK |
| Browser | Kedacom Chrome |
| Network | |
| Network Protocols | TCP/IP, UDP, HTTP, XML, IPv4 |
| User Interface | Web Client |
| System Requirements | |
| CPU | 16-core CPU or above |
| RAM | 32GB or above |
| HDD | Enterprise Class SATA HDD, 1TB, 7200 RPM, 6Gb/s, 64MB cache, or above |
| Ethernet | 1 x Gigabit network port |
| Operating System | Centos 7.4 |

Features

Manage The Data Docking Station by PC

- ZFS-KDCA1 can help you manage the data docking station by PC. You can easily access the data docking station and all the body worn cameras, download the recordings and snapshots.

Multiple Device Management

- ZFS-KDCA1 supports multiple device management. The software can manage up to 10,000 body worn cameras and 500 data docking stations. It support graphical statistics, so you can get and view the operating statistics of all the body worn camera.

High-performance, High-capacity

- Average response for web page loading: $\leq 5s$
- Maximum delay for searching response: $\leq 5s$

High Security

- Supports layered authorization
- Supports full and accurate user logs